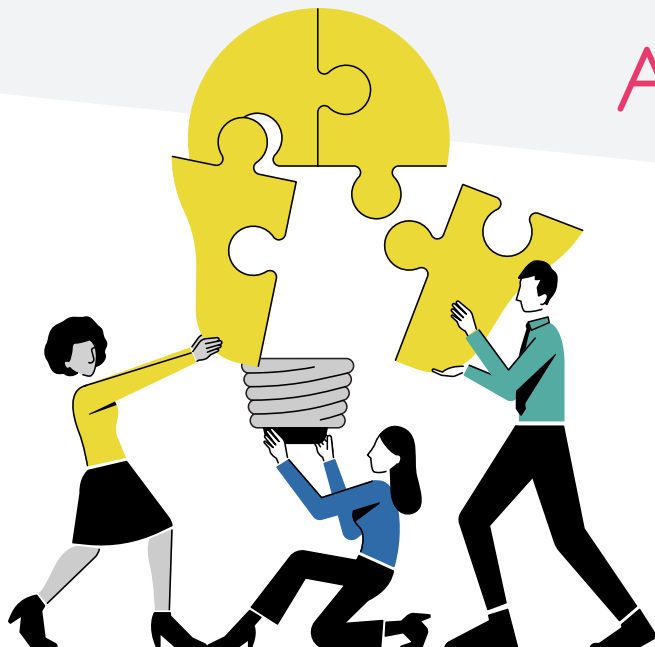


ACCIPIO



totaraengage

Engage & Deliver



BUILD YOUR BEST WORKPLACE
with collaborative knowledge sharing



ACCELERATE SKILLS ACQUISITION
with personalized learning and content curation

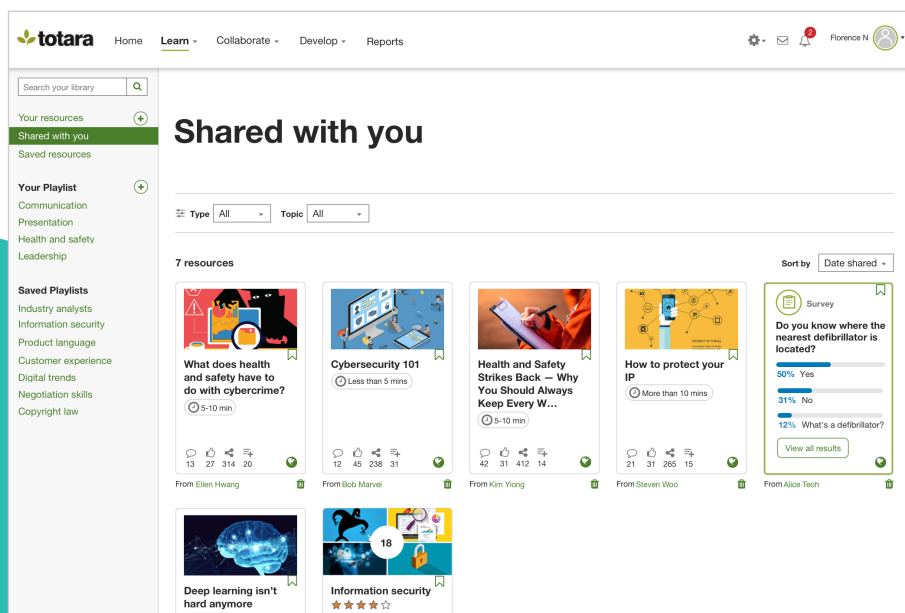


BOOST EMPLOYEE ENGAGEMENT
by bringing your workforce together

ENGAGE, UNITE AND UPSKILL YOUR WORKFORCE TO DELIVER HIGH PERFORMANCE

Investing in employee engagement will increase productivity, work quality, and help retain your top talent. Employees who are engaged and work collaboratively deliver higher quality work and are more productive.

Totara Engage is the Learning Experience Platform (LXP) to engage, unite and upskill your workforce, leading to higher organizational performance.



ALL THE TOOLS YOU NEED FOR A HIGH-PERFORMANCE WORKFORCE



CURATED CONTENT PLAYLISTS

Break down silos, spread know-how to where it's needed and encourage collaborative learning.



COLLABORATION WORKSPACES

Accelerate skill acquisition, deliver digestible knowledge in the flow of work and bring teams together.



MICROSOFT TEAMS INTEGRATION

Enables your employees to solve complex problems from a central digital space without the complexities of switching between tools.



SURVEYS

Quickly generate insights by collecting qualitative and quantitative feedback from your teams.



INTERACTIVE AND SOCIAL ACTIVITIES

Ratings, comments and curation complement formal learning programs and processes to nurture a connected learning culture.



ACCESSIBLE PERSONALIZED PLAYLISTS

Quickly source, create or curate expert knowledge in the form of articles, blogs, photos, podcasts and videos into playlists to personalize learning.



FLEXIBLE ACCESS AND SHARING SETTINGS

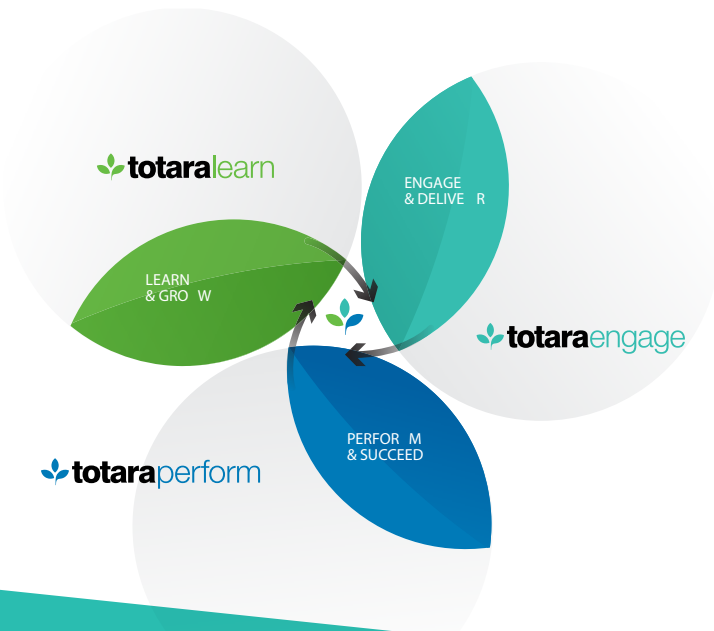
Control access and privacy rights to the content within your team's workspaces and playlists. Authorize by specific people or defined job roles.



USER AND CONTENT ENGAGEMENT REPORTS

Recognize rising talent, subject matter experts and thought leaders as well as less-engaged individuals.

ACCESS YOUR ALL-IN-ONE PRODUCTIVITY SUITE, WITH JUST A FEW CLICKS



Combine Totara Engage with Totara Learn and Totara Perform, with just a few clicks, to benefit from an integrated Talent Experience Platform that empowers your people to perform at their best.

CONTACT YOUR TOTARA PARTNER

Accipio

w: accipio.com

e: ask@accipio.com

t: +44 (0) 2071172690

a: 71 Central St, Clerkenwell, EC1V8AB, London