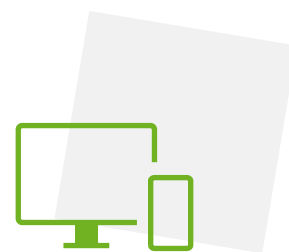




UPSKILL YOUR WORKFORCE **THE WAY YOU WANT** **WITH THE POWER AND** **FLEXIBILITY TO DELIVER** **TRANSFORMATIONAL LEARNING**

You need engaged, skilled employees. But when it comes to training, many of us are left making unnecessary compromises with rigid, overpriced and inflexible learning management systems.

Trusted by millions of learners worldwide, Totara Learn is a transformational, cost-effective learning management system (LMS) that replaces the limitations of the traditional LMS with an adaptable and extendable solution to meet your specific learning needs.



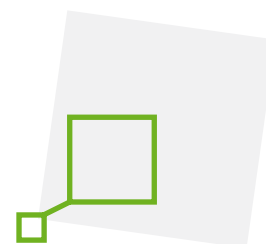
LEARN YOUR WAY

whenever and
wherever you want



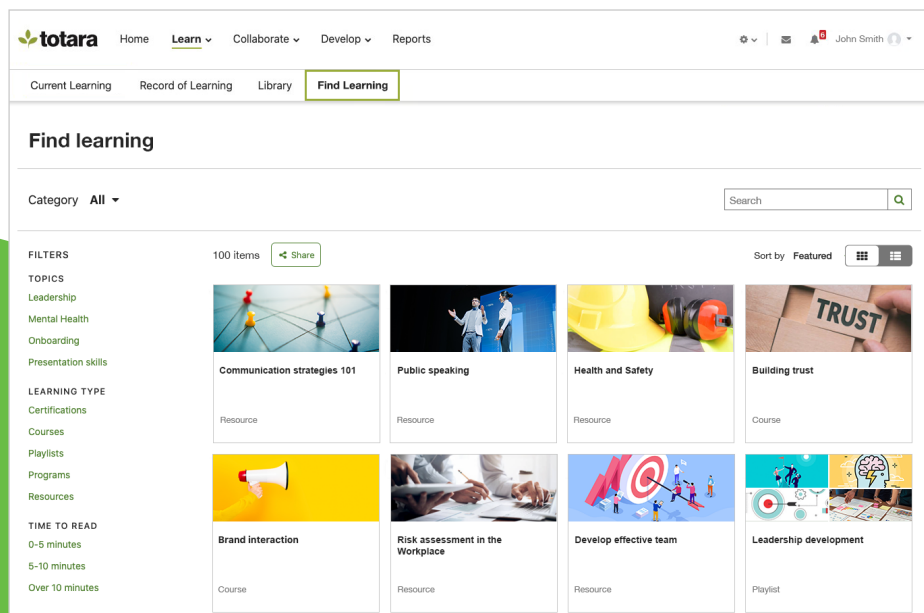
UPSKILL YOUR PEOPLE

with powerful blended and
collaborative learning tools



TRANSFORM YOUR LEARNING

to meet the needs
of your enterprise



The screenshot shows the Totara Learn web application. At the top, there's a navigation bar with 'totara' logo and links for Home, Learn, Collaborate, Develop, and Reports. Below this is a sub-navigation bar with 'Current Learning', 'Record of Learning', 'Library', and 'Find Learning' (which is highlighted). The main content area is titled 'Find learning' and includes a search bar and a category dropdown set to 'All'. On the left, there's a 'FILTERS' sidebar with sections for 'TOPICS' (Leadership, Mental Health, Onboarding, Presentation skills), 'LEARNING TYPE' (Certifications, Courses, Playlists, Programs, Resources), and 'TIME TO READ' (0-5 minutes, 5-10 minutes, Over 10 minutes). The main area displays a grid of 10 learning items, each with a thumbnail image, title, and type (Resource or Course). The items are: 'Communication strategies 101' (Resource), 'Public speaking' (Resource), 'Health and Safety' (Resource), 'Building trust' (Course), 'Brand interaction' (Course), 'Risk assessment in the Workplace' (Resource), 'Develop effective team' (Resource), 'Leadership development' (Playlist), and two more items partially visible at the bottom.

A LEARNING SUITE WITH ALL THE TOOLS YOU NEED FOR TRANSFORMATIONAL LEARNING



AUDIENCE AND AUTOMATION

allow you to automatically assign learning to groups that are categorized by role, team, skills and more.



COMPLIANCE AND TRAINING MANAGEMENT

ensure compliance to improve safety and security while reducing business risks.



LIVE EVENTS AND SEMINARS

support online and offline learning events, empowering learners to collaborate and solve problems with centrally organized blended learning.



AN ENHANCED CUSTOM REPORT BUILDER

delivers information that matters to you. Track progress and completion of learning activities, and send automatic email notifications to stakeholders.



MULTITENANCY AND EXTENDED ENTERPRISE DELIVERY

enable you to cater to multiple groups or customers from a single instance of your LMS. Streamline the admin experience with branded and isolated user environments.



OAUTH2 SINGLE SIGN-ON

supports easy access to learning with users' Microsoft, Google or Facebook credentials, helping to lower technical barriers to learning.



CUSTOM THEMING AND BRANDING

for a seamless, instantly recognizable user experience across your LMS.



COURSE MANAGEMENT

gives you maximum flexibility and control over the course setup and delivery process. Target the right learners with relevant content, at the right time.



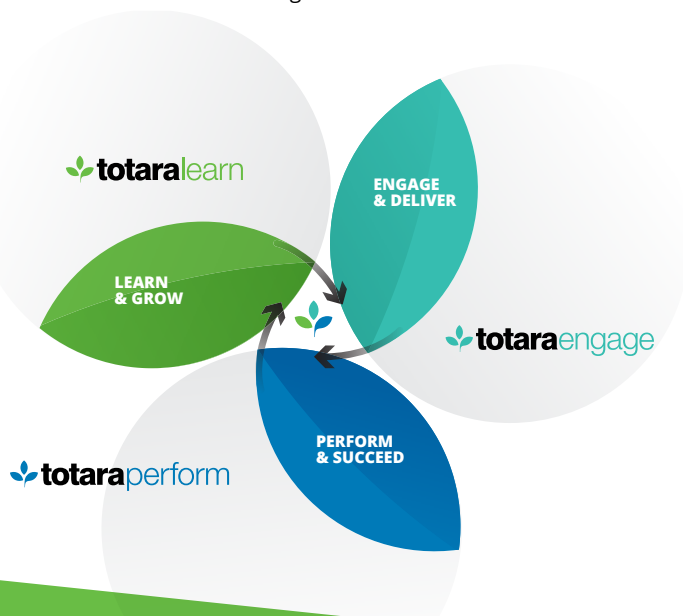
ASSESSMENTS AND CERTIFICATIONS

prove compliance and evidence course completion for effective compliance reporting.



MOBILE TRAINING APP

to deliver training on the go to improve completion rates with convenient learning.



ACCESS YOUR ALL-IN- ONE PRODUCTIVITY SUITE, WITH JUST A FEW CLICKS

Combine Totara Learn with Totara Engage and Totara Perform, with just a few clicks, to benefit from an integrated Talent Experience Platform that empowers your people to perform at their best.

*Schedule a personalized demo
or visit us on www.totaralearning.com*