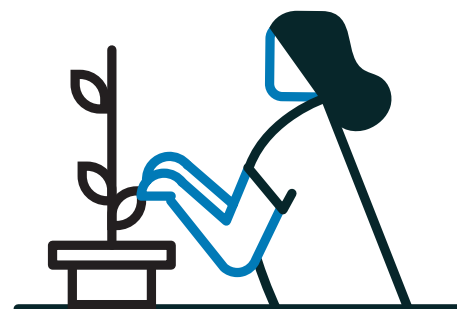




 **Perform**

Performance Management System

Your platform. Your way. Efficiently manage and deliver training to upskill your staff, improve performance, and boost retention as you grow.



Flexible approaches

Enables both traditional and continuous performance management processes



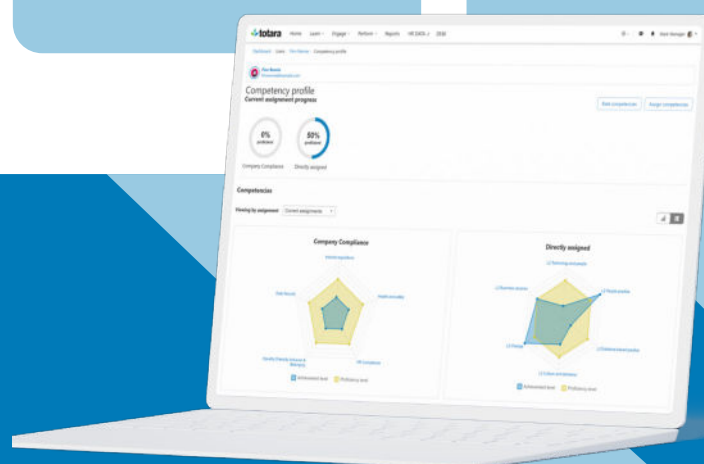
Skills-based learning

Competency profiles offer a personalized plan for learning and development



Supportive environments

Build a coach-mentor culture with check-ins, reviews, and fast feedback



Schedule a personalized demo or visit us at www.totara.com

Your platform. Your way.

Motivate staff and retain highly-skilled employees



Performance review workflow builder

A powerful performance review workflow builder enables you to craft performance management processes that match your unique workflows.



Frequent and flexible performance check-ins

Ensure your staff and management are aligned to boost organizational output.



360-Degree feedback

Accurately gauge strengths, weaknesses and opportunities by balancing self-evaluation with input from peers.



Continuous performance management tools

Enhance existing, or introduce new appraisal processes with frequent check-ins, feedback and other activities that make it easier for managers and staff to reach organizational goals.



Traditional and modern performance management

Totara Perform enables traditional and modern performance management, so you can adapt to your organization's specific workflows, processes and schedules.



Intuitive detailed reports

The performance insights you need, when you need them. Quickly identify top performers or circle those who need extra support to have meaningful management conversations.



Open-source and flexible frameworks

Unlike proprietary software vendors, you get the freedom to adapt and innovate around the specific needs of your organization.



Track skills and development

Identify and close skill gaps across the entire workforce. Then prescribe actions and content that align the goals of your people and organization.



Connect with Totara Learn

Totara Perform is integrated with our transformational Learning Management System (LMS), Totara Learn, to connect competency management to critical learning requirements.

Totara Learn & Perform complete your full performance and development system.

Learn + Engage

Learn: (LMS & LXP) Your organizations can save time & money, retain staff through training, and improve business outcomes beyond compliance.

Perform

Perform: Efficiently manage and deliver training to upskill your staff, improve performance, and boost retention.

Choosing Totara means flexibility and a solution tailored to your needs.

Accipio

Contact Accipio
www.accipio.com